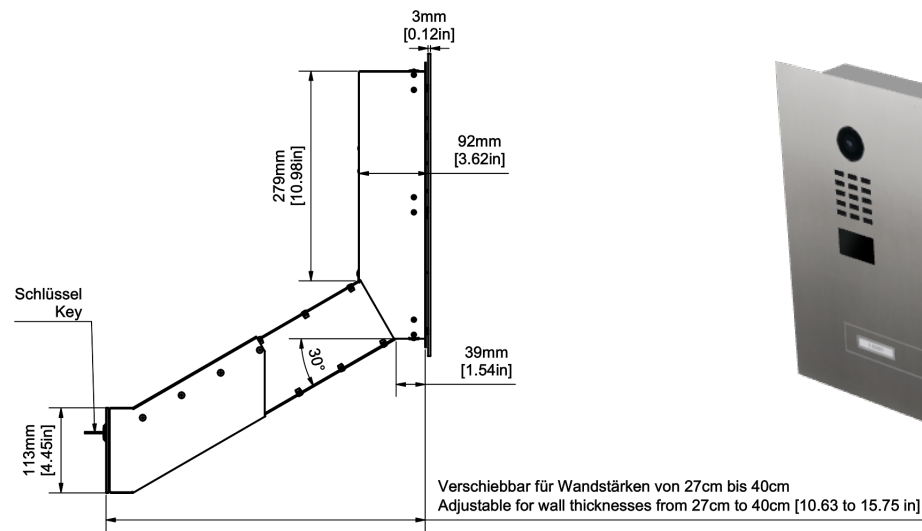
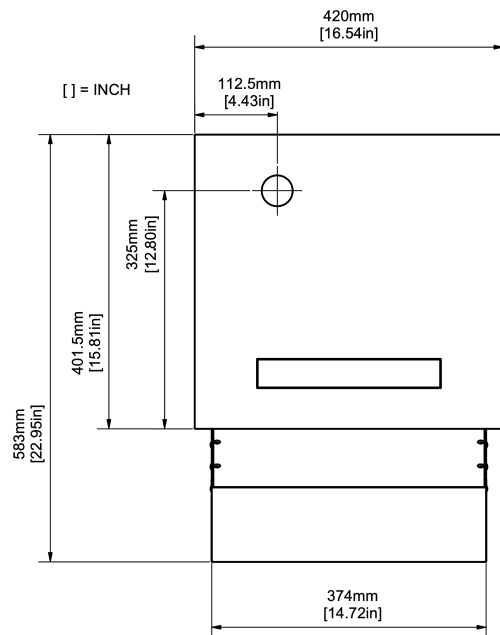


Representation of the outer dimensions (See the details in visualization)



Technical data:

Wall-through system with one throw-in flap

Material: Stainless steel V4A (salt-water resistant), brushed

Flap: Letterbox flap with nameplate, white, for self-labeling, not illuminated. Flush with front panel.

1x Keypad module with 12 stainless steel keys, backlit

1x Rectangular call button with nameplate, for self-labelling, white backlit

This system is an individual production according to customer specifications. The legal right of withdrawal therefore does not exist according to § 312 g Abs. 2 Nr. 1 BGB. Since the automated production process is started immediately after receipt of the order, a cancellation, a return or exchange after placing the order is not possible.

Date: 2024-12-15
Time: 11:00:28 CET
Project ID: DBI-13492728



Bird Home Automation GmbH
Uhlandstraße 165
D-10719 Berlin, Germany
Confidential